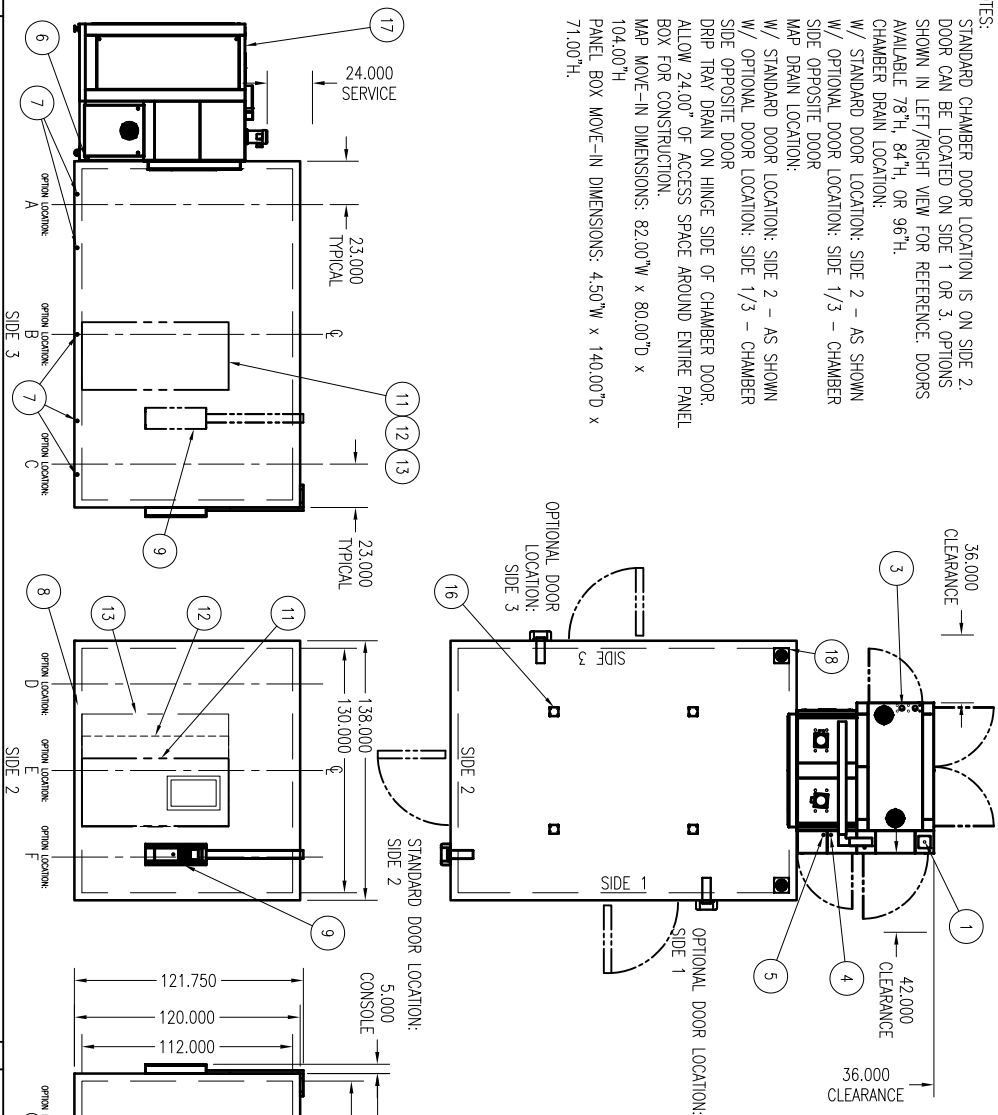


- NOTES:
1. STANDARD CHAMBER DOOR LOCATION IS ON SIDE 2. DOOR CAN BE LOCATED ON SIDE 1 OR 3. OPTIONS SHOWN IN LEFT/RIGHT VIEW FOR REFERENCE. DOORS AVAILABLE 78"H, 84"H, OR 96"H.
 2. CHAMBER DRAIN LOCATION: SIDE 2 - AS SHOWN W/ STANDARD DOOR LOCATION: SIDE 1/3 - CHAMBER SIDE OPPOSITE DOOR
 3. MAP DRAIN LOCATION: W/ STANDARD DOOR LOCATION: SIDE 2 - AS SHOWN W/ STANDARD DOOR LOCATION: SIDE 1/3 - CHAMBER SIDE OPPOSITE DOOR
 4. DRIP TRAY DRAIN ON HINGE SIDE OF CHAMBER DOOR. SIDE OPPOSITE DOOR
 5. ALLOW 24.00" OF ACCESS SPACE AROUND ENTIRE PANEL BOX FOR CONSTRUCTION.
 6. MAP MOVE-IN DIMENSIONS: 82.00"W x 80.00"D x 104.00"H
 7. PANEL BOX MOVE-IN DIMENSIONS: 4.50"W x 140.00"D x 71.00"H.



NO.	NAME	QTY.	REMARKS
1	MAIN POWER INLET	1	
2	MAIN POWER DISCONNECT	1	
3	COOLING WATER IN/OUT	1	
4	HUMIDITY WATER INLET	1	
5	COMPRESSED AIR INLET	1	
6	MAP DRAIN	1	
7	CHAMBER DRAIN	5	
8	DOOR DRIP PAN DRAIN	1	
9	OPERATOR INTERFACE	1	LATCH SIDE OF DOOR
10	OPTION PANEL	1	
11	DOOR, 36" W X 78" H W/ WINDOW	1	SELECT DOOR SIDE
12	DOOR, OPTIONAL 48" W X 78" H W/ WINDOW	N/A	SELECT DOOR SIDE
13	DOOR, OPTIONAL 60" W X 78" H W/ WINDOW	N/A	SELECT DOOR SIDE
14	OPTIONAL WINDOW, 14" W X 24" H VIEW	A/R	PICK OPTION LOCATION A-J
15	CABLE PORT: #2", 4" OR 6"	A/R	PICK OPTION LOCATION A-J
16	LIGHT 100W	4	
17	MODULAR AIR PLENUM (MAP)	1	
18	VENT PORT	2	

TITLE: CHAMBER CONCEPT

DATE: 6/22/2016

SCALE: 1:35

DESIGNED BY: N. DIERLAM

DRAWN BY: N. DIERLAM

TOLERANCE: ±0.500 [13]

UNITS: INCHES

MODEL NO.: 12 X 16 X 10 - MAP1

DRAWING NO.: EWP1483

REVISION: 1 OF 2

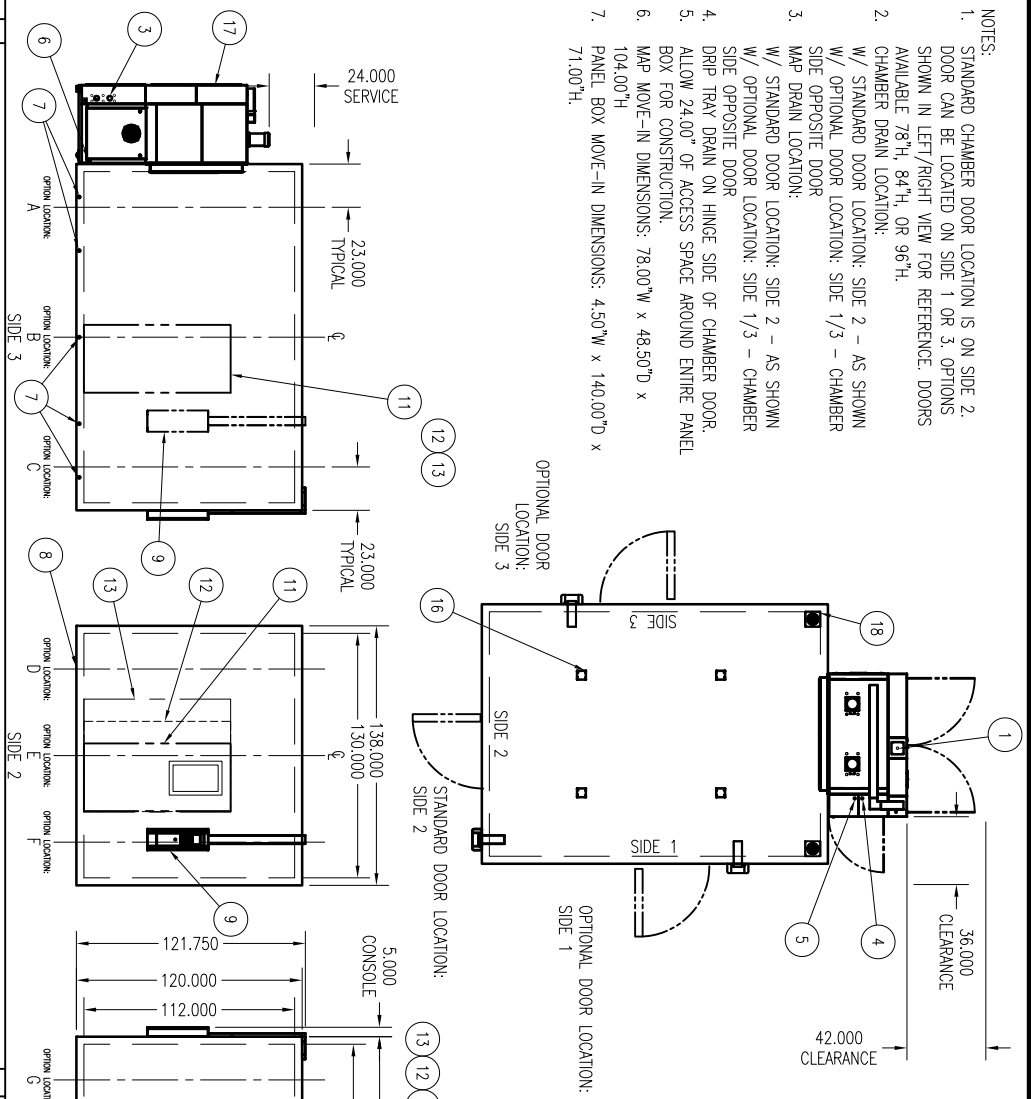
ESPEC NORTH AMERICA, INC.
4141 Central Parkway
Hudsonville, MI 49426

espec

TITLEB; EFD 0603B
10-22-98 REV. 1.01

DRAWING REVISION

- NOTES:
- STANDARD CHAMBER DOOR LOCATION IS ON SIDE 2. DOOR CAN BE LOCATED ON SIDE 1 OR 3. OPTIONS SHOWN IN LEFT/RIGHT VIEW FOR REFERENCE. DOORS AVAILABLE 78"H, 84"H, OR 96"H.
 - CHAMBER DRAIN LOCATION:
W/ STANDARD DOOR LOCATION: SIDE 2 - AS SHOWN
W/ OPTIONAL DOOR LOCATION: SIDE 1/3 - CHAMBER SIDE OPPOSITE DOOR
 - MAP DRAIN LOCATION:
W/ STANDARD DOOR LOCATION: SIDE 2 - AS SHOWN
W/ OPTIONAL DOOR LOCATION: SIDE 1/3 - CHAMBER SIDE OPPOSITE DOOR
 - DRIP TRAY DRAIN ON HINGE SIDE OF CHAMBER DOOR.
 - ALLOW 24.00" OF ACCESS SPACE AROUND ENTIRE PANEL BOX FOR CONSTRUCTION.
 - MAP MOVE-IN DIMENSIONS: 78.00"W x 48.50"D x 104.00"H
 - PANEL BOX MOVE-IN DIMENSIONS: 4.50"W x 140.00"D x 71.00"H.



NO.	NAME	QTY.	REMARKS
1	MAIN POWER INLET	1	
2	MAIN POWER DISCONNECT	1	
3	COOLING WATER IN/OUT	1	
4	HUMIDITY WATER INLET	1	
5	COMPRESSED AIR INLET	1	
6	MAP DRAIN	1	
7	CHAMBER DRAIN	5	
8	DOOR DRIP PAN DRAIN	1	
9	OPERATOR INTERFACE	1	LATCH SIDE OF DOOR
10	OPTION PANEL	1	
11	DOOR, 36" W X 78" H W/ WINDOW	1	SELECT DOOR SIDE
12	DOOR, OPTIONAL 48" W X 78" H W/ WINDOW	1	SELECT DOOR SIDE
13	DOOR, OPTIONAL 60" W X 78" H W/ WINDOW	N/A	SELECT DOOR SIDE
14	OPTIONAL WINDOW, 14" W X 24" H VIEW	A/R	PICK OPTION LOCATION A-J
15	CABLE PORT: #2", 4" OR 6"	A/R	PICK OPTION LOCATION A-J
16	LIGHT 100W	4	
17	MODULAR AIR PLENUM (MAP)	1	
18	VENT PORT	2	

MATERIAL		DATE		TITLE:	
DRAWN N. DIERLAM		6/22/2016		CHAMBER CONCEPT	
DESIGNED N. DIERLAM		SCALE 1:35		MODEL NO. 12 X 16 X 10 - MAP2	
TOLERANCE ±0.500 [13]		UNITS INCHES		DRAWING NO. EWP1483 2 OF 2	
				REVISION	
				ESPEC NORTH AMERICA, INC. 4141 Central Parkway Hudsonville, MI 49426	